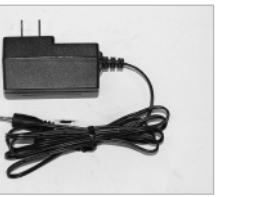


# 1 Connect the Modem to a Computer

**Step 1** Get the **Wireless DSL Modem** from your DSL Quick Start Kit and take it out of the bag.

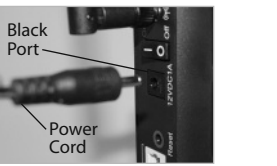


**Step 2** Get the **Power Cord** from your DSL Quick Start Kit.

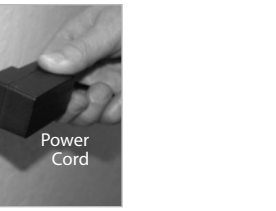


**Note:** Your Power Cord may look different.

**Step 3** Plug the smaller end of the **Power Cord** into the **Black Port** on the back of the Modem.



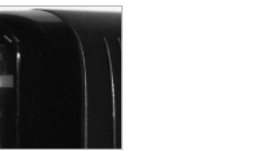
**Step 4** Plug the larger end of the **Power Cord** into a **Power Outlet**.



**Step 5** Make sure the **Power Switch** is ON.

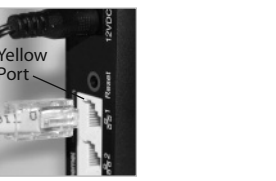


**Step 6** Make sure the **Power Light** on the Modem is SOLID **Green**.



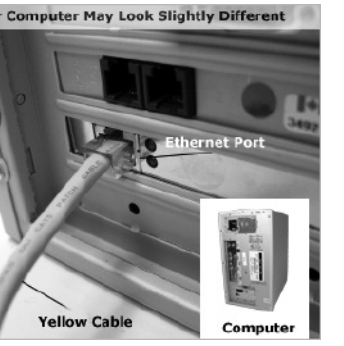
**Note:** The DSL light may blink.

**Step 7** Get the **Yellow Cable**.



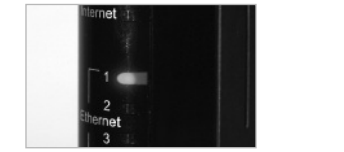
**Step 8** Plug one end of the **Yellow Cable** into any of the **Yellow Ports** on the back of the Wireless DSL Modem.

**Step 9** Make sure that your computer is turned on. Then, plug the other end of the **Yellow Cable** into the **Ethernet Port** on the back of the computer.



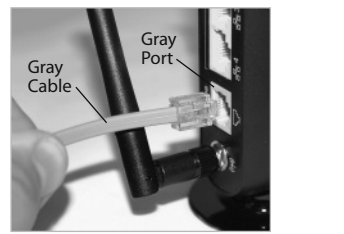
An **Ethernet Port** looks similar to a regular Phone Jack, but is slightly larger.

**Step 10** Make sure that 1 of the 4 **Ethernet lights** on the Modem is **Green**. This may take a few moments.



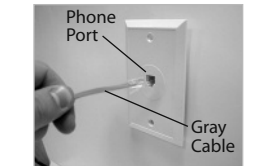
**Note:** If the Ethernet Light does **NOT** turn green, make sure the Yellow Cable is properly connected on both ends.

**Step 11** Get the **Black or Gray Phone Cable** from your DSL Quick Start Kit.



**Step 12** Plug one end of the **Phone Cable** into the **Gray Port** located on the back of the Modem.

**Step 13** Plug the other end of the **Phone Cable** into the **Phone Jack** closest to your computer.



**Step 14** Make sure **All Devices Except This DSL Modem** with the same phone number as your DSL Line have Phone Filters. This includes telephones, fax machines, caller ID boxes, satellite TV receivers, TiVo devices, and answering machines.



**Step 15** Make sure that the **Power and DSL Lights** are solid **Green**. This may take up to 30 seconds.

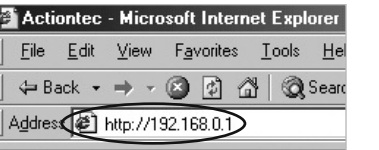


**Note:** If the DSL Light continues to blink, make sure you received notification from your DSL Internet Service Provider that your DSL service has been activated.

# 2 Configure the Modem for AT&T

For all other DSL Services skip to Section 3

**Step 1** Open a Web browser (Netscape Navigator or Internet Explorer, for example). In the address bar, enter **http://192.168.0.1** then press **Enter** on the keyboard.



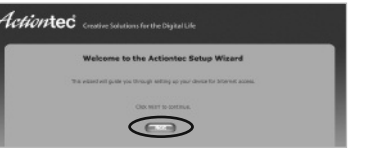
**Note:** When you open your web browser you may get a page cannot be displayed error. This is normal and will not effect the instructions in step 1.

**Step 2** The "Main Menu" screen appears. Select **If you are an AT&T customer Click Here**.



**Note:** If this screen does not appear, make sure your Ethernet port is configured for Dynamic IP.

**Step 3** The "Welcome" screen appears. Click **Next**.



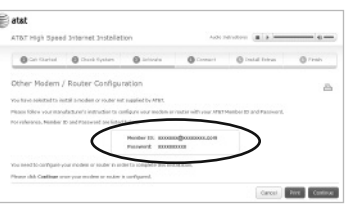
**Step 4** The Modem is now connecting to AT&T. This process can take up to 3 minutes.



**Step 5** Follow the AT&T online instruction to complete setting up the Modem.

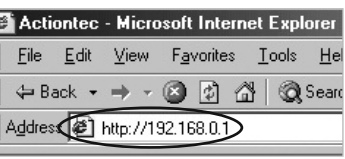


**Step 6** If this browser window appears, write down the "Member ID" and "Password".

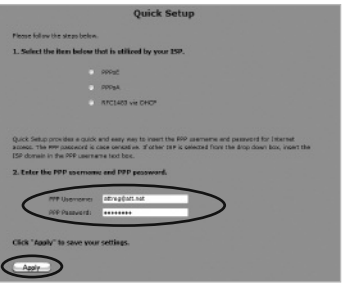


Member ID \_\_\_\_\_  
Password \_\_\_\_\_

**Step 7** Open a new browser window. In the address bar of this new window, enter **http://192.168.0.1** then press **Enter** on the keyboard.



**Step 8** The "Quicksetup" screen appears. Enter the Member ID and the password you wrote down in step 6 in the "PPP User Name" and "PPP Password" text boxes. Then click **Apply**.



**Step 9** Wait 2 minutes and return to the AT&T window and complete the AT&T installation process.

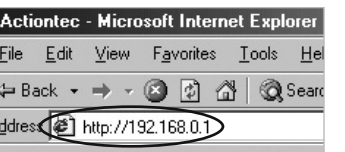
If you have any problems connecting or configuring this device please contact our Tech Support at **1-888-436-0657**

Flip this Quick Start Guide over to continue



### 3 Configure the Modem for All Other Service Providers

**Step 1** Open a Web browser (Netscape Navigator or Internet Explorer, for example). In the address bar, enter **http://192.168.0.1** then press **Enter** on the keyboard.



**Note:** When you open your web browser you may get a page cannot be displayed error. This is normal and will not effect the instructions in step 1.

**Step 2** The "Main Menu" screen appears. Select **All other Service Providers Click Here for Auto Detection**.



**Note:** If this screen does not appear, make sure your Ethernet port is configured for Dynamic IP.

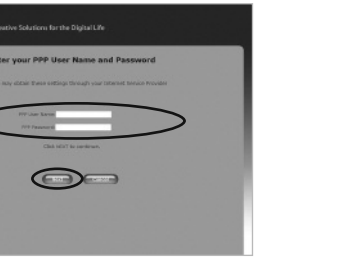
**Step 3** The "Welcome" screen appears. Click **Next**.



**Step 4** The Modem is now detecting your Internet provider's settings. This process can take up to 3 minutes.



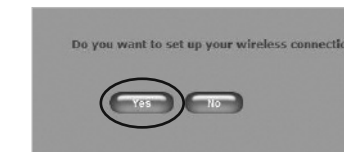
**Step 5** In the next window, enter your primary **User Name and Password** provided by your ISP. Click **Next**.



**Hint:** Your Username may be your main e-mail address.

### 4 Configure Wireless Connection and Security

**Step 1** Click the **YES** button.



**Note:** The Wireless Wizard can also be run from the Wireless Basic Setup page of the Modem's GUI.

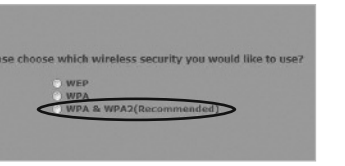
**Step 2** Select a name for your wireless network and enter it in the "ESSID" field. Then click **NEXT** to continue.



**Step 3** It is recommended that you secure your wireless network by clicking **Yes**. If you choose not to secure your network, click **No** and you will have completed the installation.

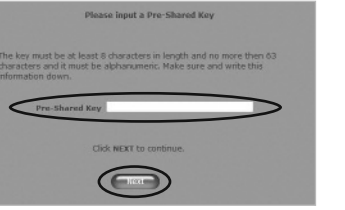


**Step 4** Select the type of wireless security that you want to use. Actiontec recommends using **WPA&WPA2**. The following steps will show you how to enable **WPA&WPA2** wireless security.

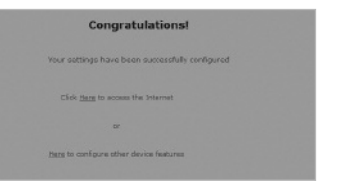


**Note:** All of your other wireless devices will need to support that same type of wireless security chosen in order to connect to your wireless network.

**Step 5** Enter in a password or pre-shared key. The key must be at least 8 characters long. Click **NEXT** to continue.



**Step 6** The "Congratulations" screen appears. The DSL Light will glow **SOLID Green** and the Internet Light will flicker **Green** indicating Internet activity.



**Congratulations!**  
You have successfully installed your DSL Modem.  
You can now access the Internet.

If you have any problems connecting or configuring this device please contact our Tech Support at **1-888-436-0657**

Service provider phone numbers	
AOL 888-418-5320	Iowa Telecom 877-901-4692
AT&T 877-722-3755	MSN 877-327-6744
AT&T/BellSouth 888-321-2375	Qwest 800-247-7285
Century Tel 800-809-1410	SureWest 888-639-1611
Covad DSL 888-642-6823	TDS DSL Support 866-571-6662
Earthlink 888-829-8466	US Family 800-300-4256
Embarq 888-723-8010	Verizon 800-567-6789

© 2010 Actiontec Electronics, Inc. Actiontec, Actiontec Installation Buddy, Creative Solutions for the Digital Life, and the Actiontec logo are registered trademarks or trademarks of Actiontec Electronics, Inc. Incorporated in the U.S. or other countries. All other names are properties of their respective owners. Product photo may differ from actual product, however functionality remains as stated above. Specifications are subject to change without notice

# Wireless DSL Modem

Model# GT784WN

## Quick Start Guide

**Note: Compatible with Macintosh, Linux and Windows.**

This Quick Start Guide will walk you through the easy steps to set up your Wireless DSL Modem. During this process, we'll show you how to:

- 1 Connect the Modem to a Computer**
- 2 Configure the Modem for AT&T**
- 3 Configure the Modem for All Other Service Providers**
- 4 Configure Wireless Connection & Security**

You will need the following items from your Actiontec Quick Start Kit:

- Wireless DSL Modem
- Black or Gray Phone Cable
- Black Power Cord
- Yellow Cable

You will also need to know your DSL Username and Password provided by your Internet Service Provider.

NEXT